

MADERA

Established 1893



State Of California

COUNTY













MADERA COUNTY
MUSEUM



200

MADERA COUNTY GOVERNMENT CENTER

MADERA COUNTY GOVERNMENT CENTER
CLERK OFFICES

MADERA COUNTY GOVERNMENT CENTER

Now let's talk trash...



09/25/2009 11:22





09/29/2009 07:44



09/29/2009 07:51

MADERA COUNTY
HOUSEHOLD
HAZARDOUS WASTE
COLLECTION FACILITY



DANGER!
HAZARDOUS
WASTE AREA
UNAUTHORIZED
PERSONNEL
NOT ALLOWED

FOR INFORMATION
CALL THE COUNTY OF
MADERA HAZARDOUS
WASTE UNIT
OR CONTACT THE
MADERA COUNTY
SOLID WASTE
DEPARTMENT

Household
Hazardous
Waste Facility
Hours:
Monday - Friday
8:00 am to 5:00 pm



09/29/2009 07:39









'JURASSIC' DUMP

Garbage pit turns up fossils

A GARBAGE dump has become a real-life Jurassic Park.

Workers digging the landfill in California's Central Valley were stunned when they uncovered a 43-foot-deep layer of bones belonging

to ancient mammoths, mastodons and other giant prehistoric creatures.

They were apparently trapped in a sudden volcanic mud flow, and their bodies were miraculously preserved — as if they were flash-frozen in time for future genera-

tions. In fact, the spectacular find has been declared a fossil bonanza!

"Scientists are just staggered by the enormity of it," gushes anthropologist Roger Ludejensse of nearby Fresno State College.

"If the animals got there by a large mud flow,

we may have a snapshot of what life was like back then."

Researchers are also interested in the role early man may have played in the extinction of the animals, adds Nancy Sharp, of Inlotec Research Inc. in Fresno.

The plan is to dig even



deeper below the level exposed by Madera County workers at the Fairmead Landfill to uncover the fossils of more extinct animals.

Despite their incredible scientific value, the fossils have become a bone of contention for money-strapped Madera County officials.

They aren't thrilled by the discovery, and are grumbling that their current dump will fill up within months.

They now face the problem of finding and excavating another site after spending \$47,000 for the Fairmead excavation.

But scientists, who usually have to dig for months to uncover pre-

DINO-SIGNS: Scientists are still digging up the bones of prehistoric creatures that once roamed the Earth.

historic treasures, aren't complaining — they didn't even have to lift a shovel.

"I've never seen so many fossils in one place," raves archaeologist Marcus Argusello, of Merced College.

"Just the fact that you have so many months to do it is itself very remarkable."

And Ludejensse adds: "The area that contains bones is potentially enormous."

— ERIC HOLMBERG

Prehistoric poop is going like hotcakes

ROCK HOUNDS Richard and Marilyn Rickman are ecstatic over the success of Jurassic

ALPHA HYDROXY CREME

EXFOLIATING MOISTURIZER & WRINKLE REDUCER

NEW MEDICAL DISCOVERY CAN ACTUALLY HELP YOU
Grow A Fresh New Skin!

- IN AS LITTLE AS 10 TO 14 DAYS -

You've seen famous name brand alpha hydroxy cremes selling for as much as \$40 per ounce, but our per ounce price is just \$5.

-SPECIAL-
DIRECT TO YOU PRICE

TWO
OUNCES
ONLY **\$10**

























Harris & Jefferson (1985)

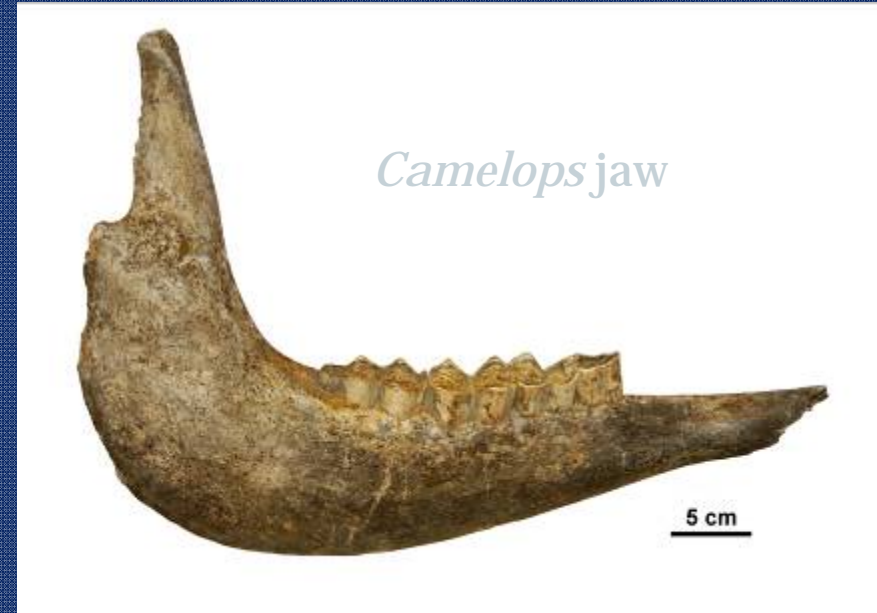
Horse (*Equus*)

Right lateral view,
adult cranium.



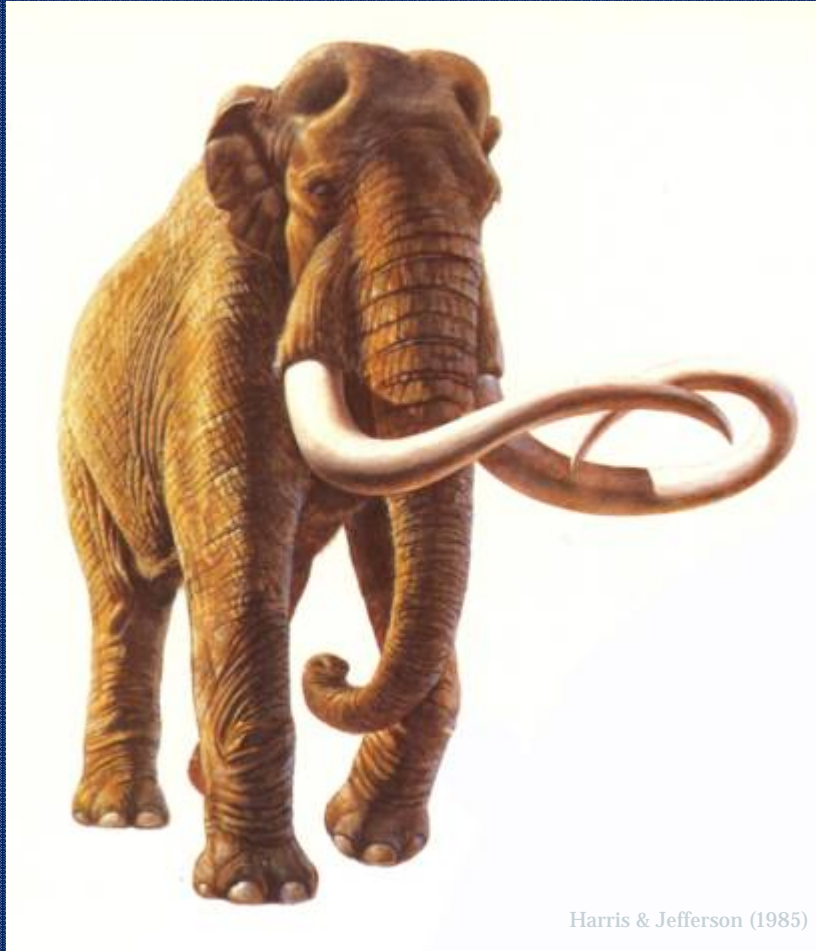
Juvenile, left jaw.

Camel (*Camelops*) & Llama (*Hemiauchenia*)



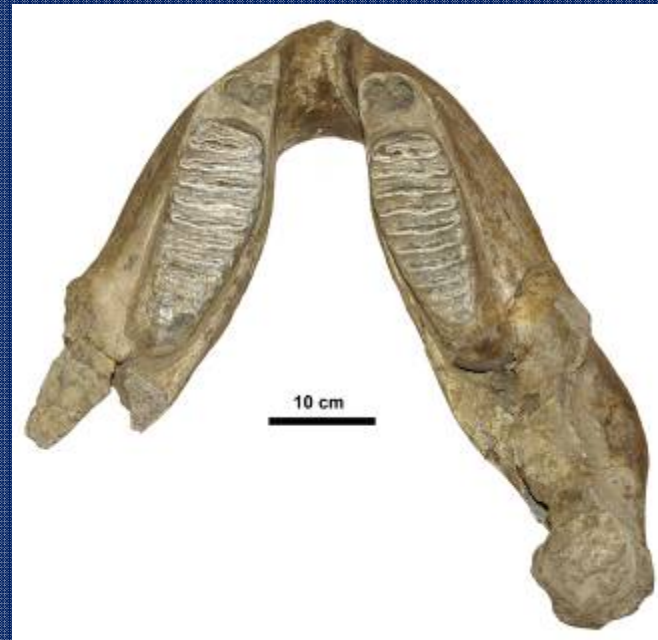
Juvenile camel metacarpal & phalanges, articulated.

Columbian Mammoth (*Mammuthus columbi*)



Partial right jaw.
Individual ~8 years old.

Jaw with second molar
in wear. Individual
~26 years old (below).



Harlan's Ground Sloth (*Paramylodon harlani*)



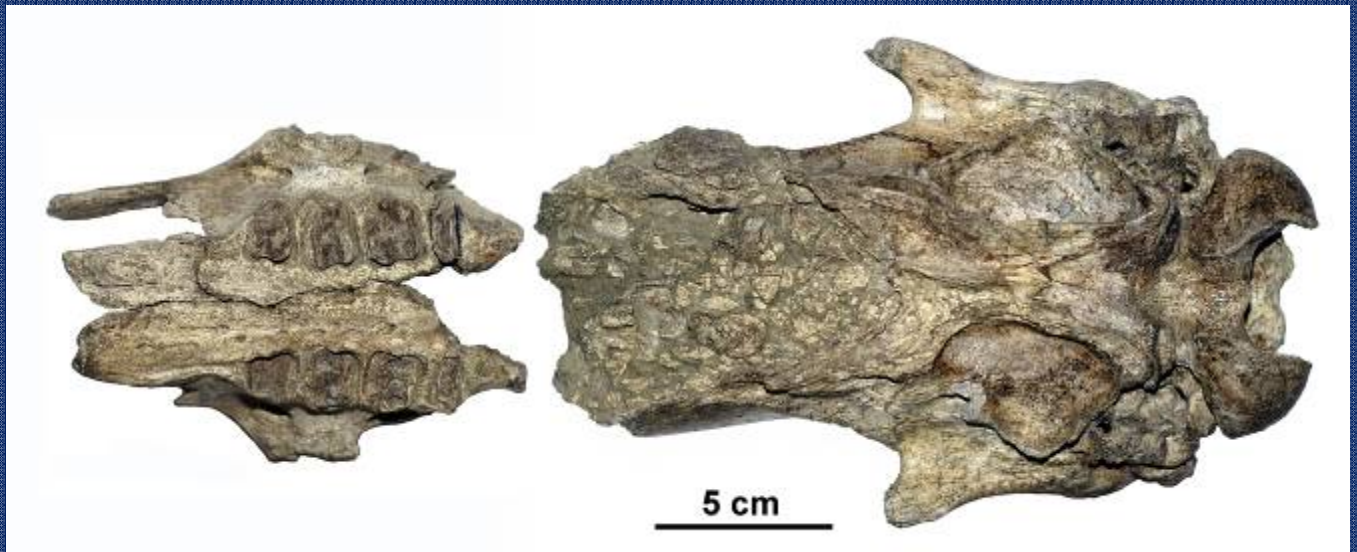
Right jaws, young to adult



Texas Nothrothere Ground Sloth (*Nothrotheriops texanus*)



Skull, ventral view (below).



Leidy's Peccary (*Platygonus vetus*)



Associated forelimb laid out in the position in which it was discovered.



Irvington Pronghorn Antelope (*Tetrameryx irvingtonensis*)



Skull fragment with horn cores.

Deer (*Odocoileus*)



Odocoileus virginianus,
Scott Bauer photo (USDA, ARS)



Base of antler.

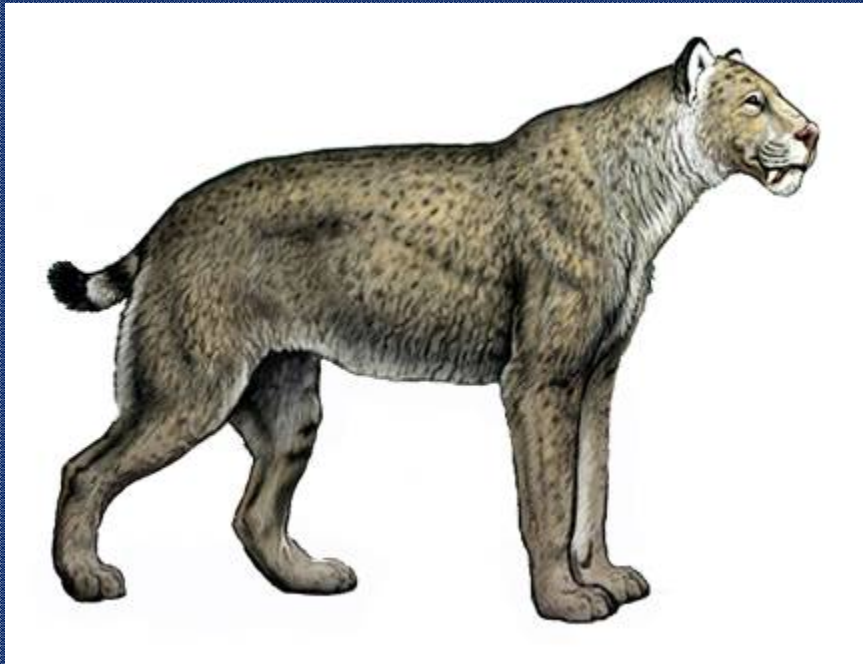
Dire Wolf (*Canis cf. C. dirus*)



Jaw, occlusal (above)
and right lateral view (below).



Scimitar Cat (*Homotherium*)



Skull, right side view.



Side view, right upper canine.

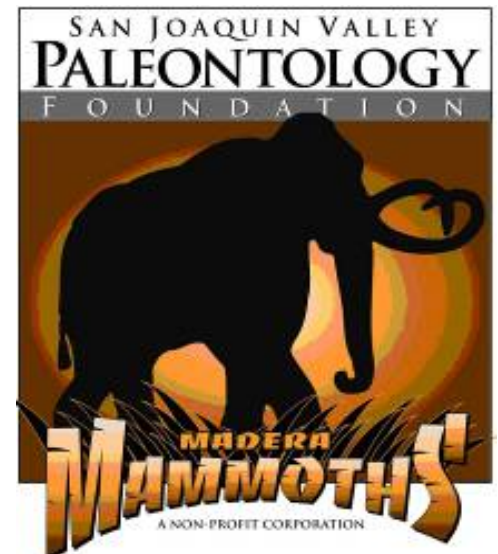
Sabertooth Cat (*Smilodon*)



A pride of *Smilodon* at Fairmead Landfill by David Douglas.

Left side view of skull.
Basicranial features suggest this is neither *Smilodon fatalis* nor *Smilodon gracilis*.







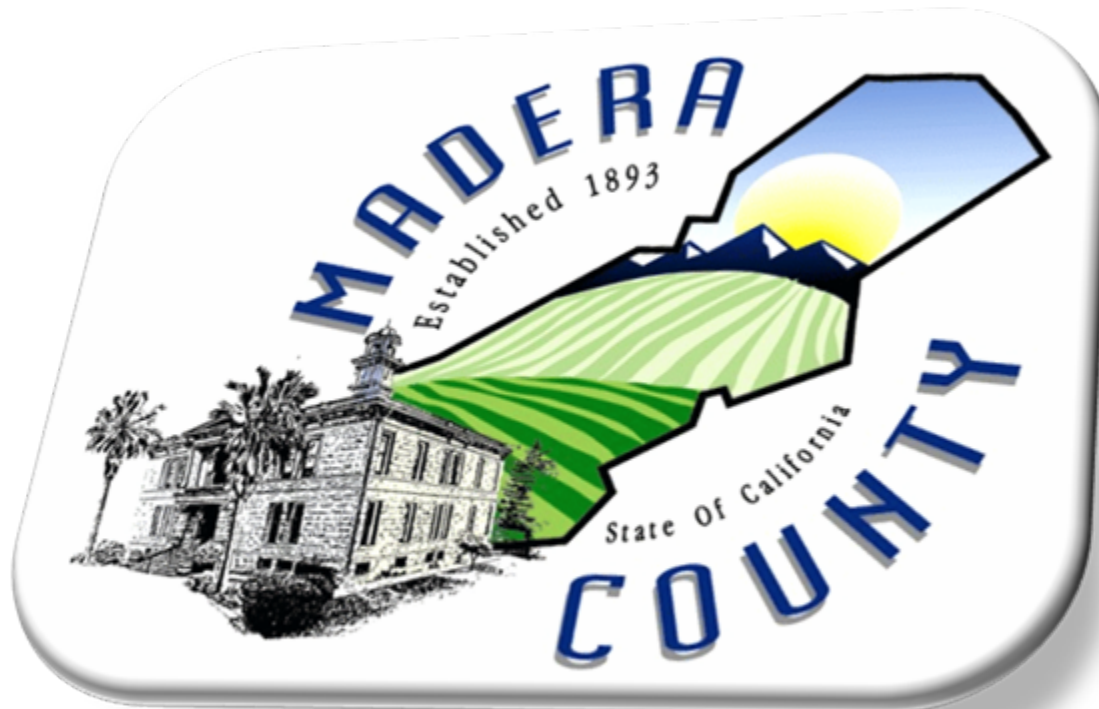
Groundbreaking ceremony for The Madera County Fossil Discovery Center











Madera County Resource Management Agency
Department of Engineering & General Services
Division of Solid Waste
Keith Quinlan, Solid Waste Manager
(559) 675-7817 keith.quinlan@madera-county.com